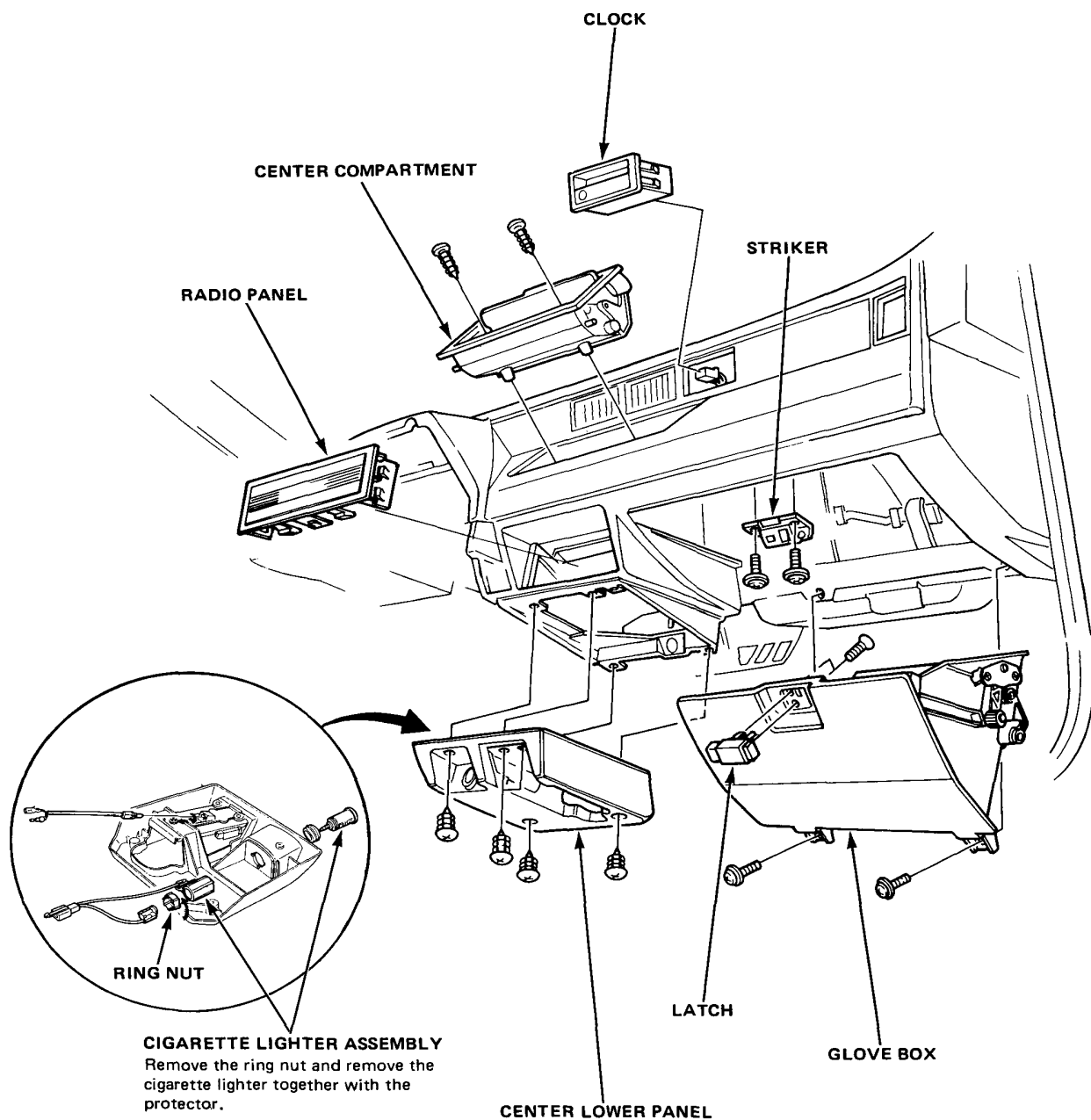


Dashboard Accessory

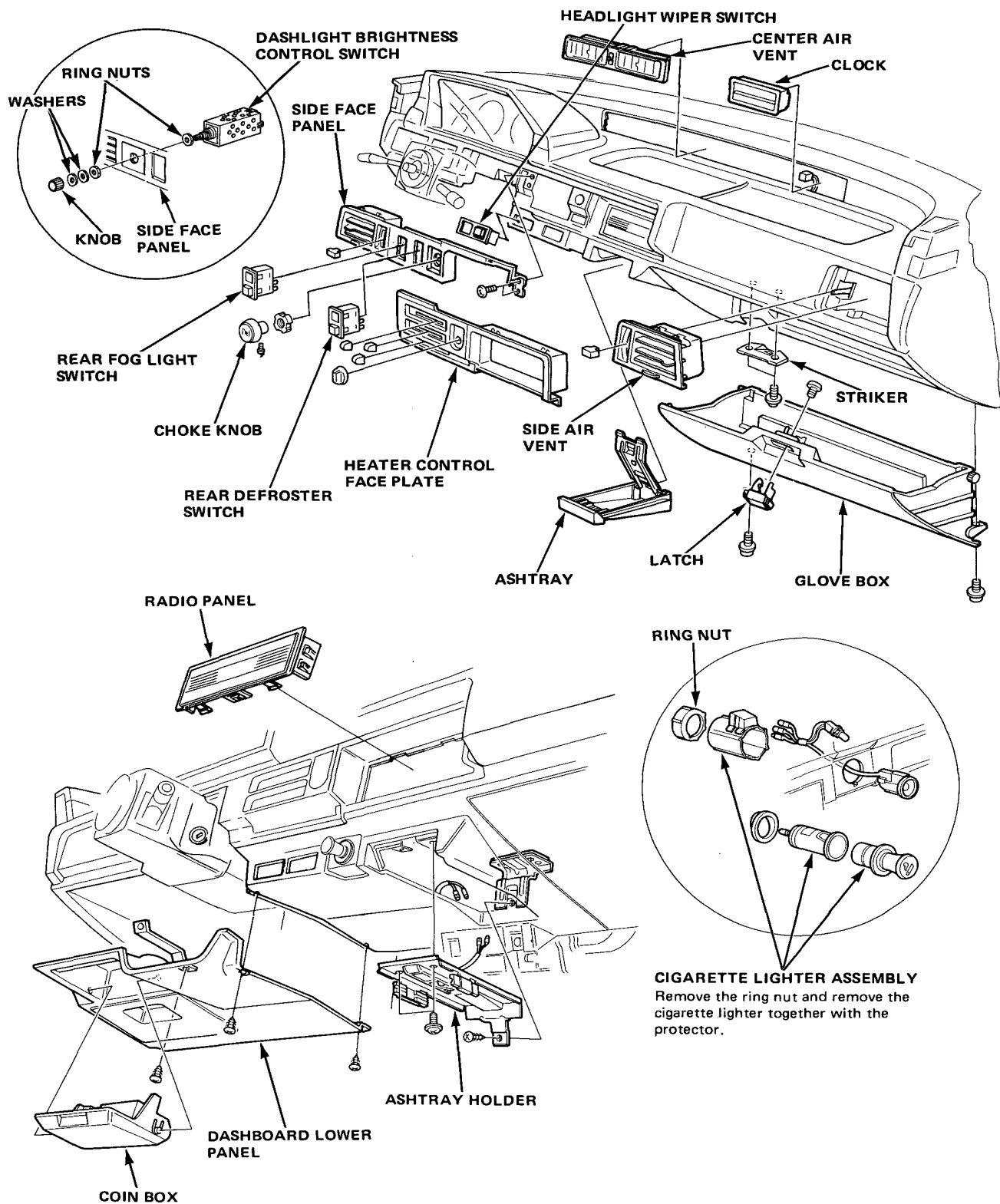


Removal/Installation (Coupe)



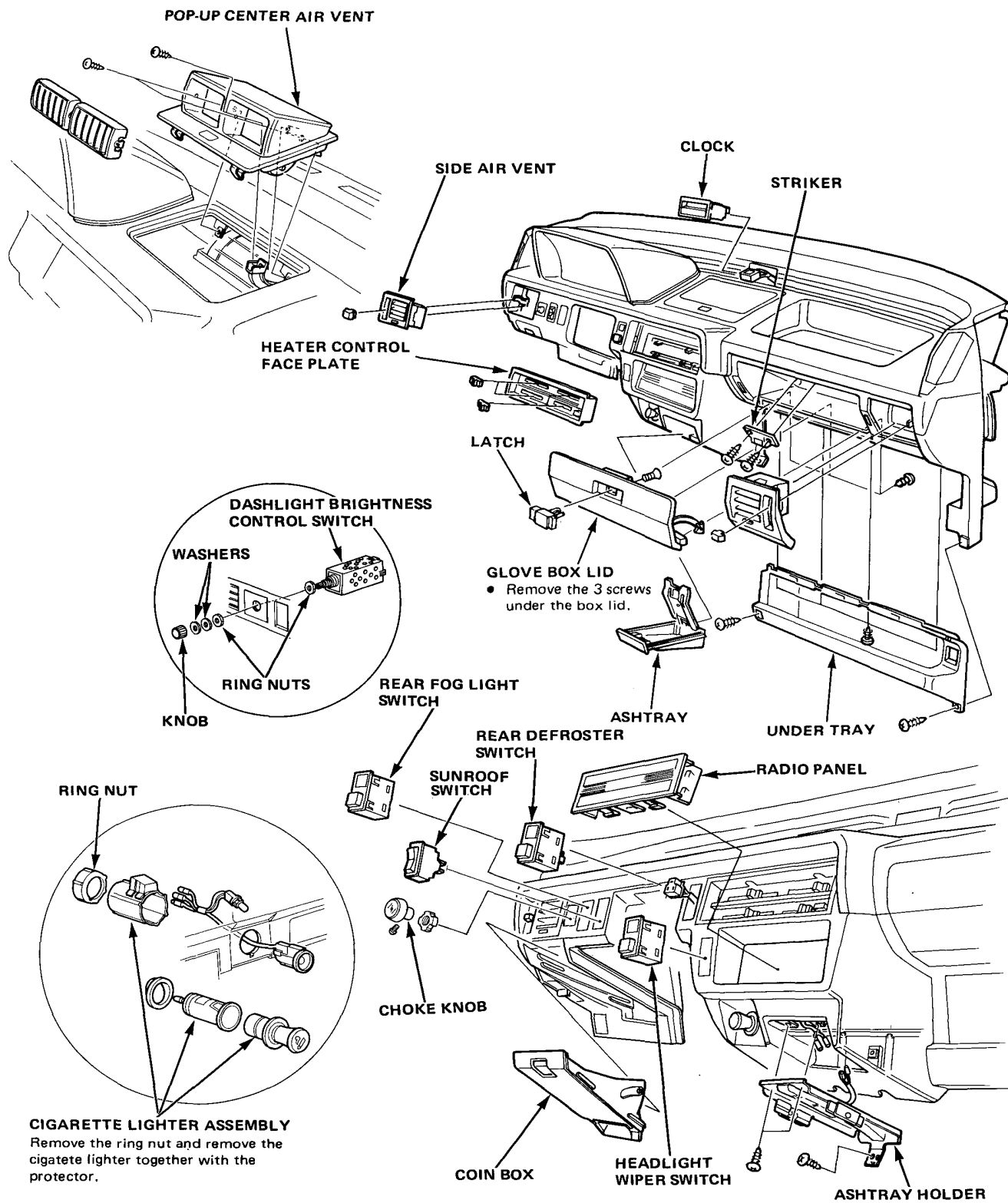
Dashboard Accessory

Removal/Installation (2D H/B and 4D)





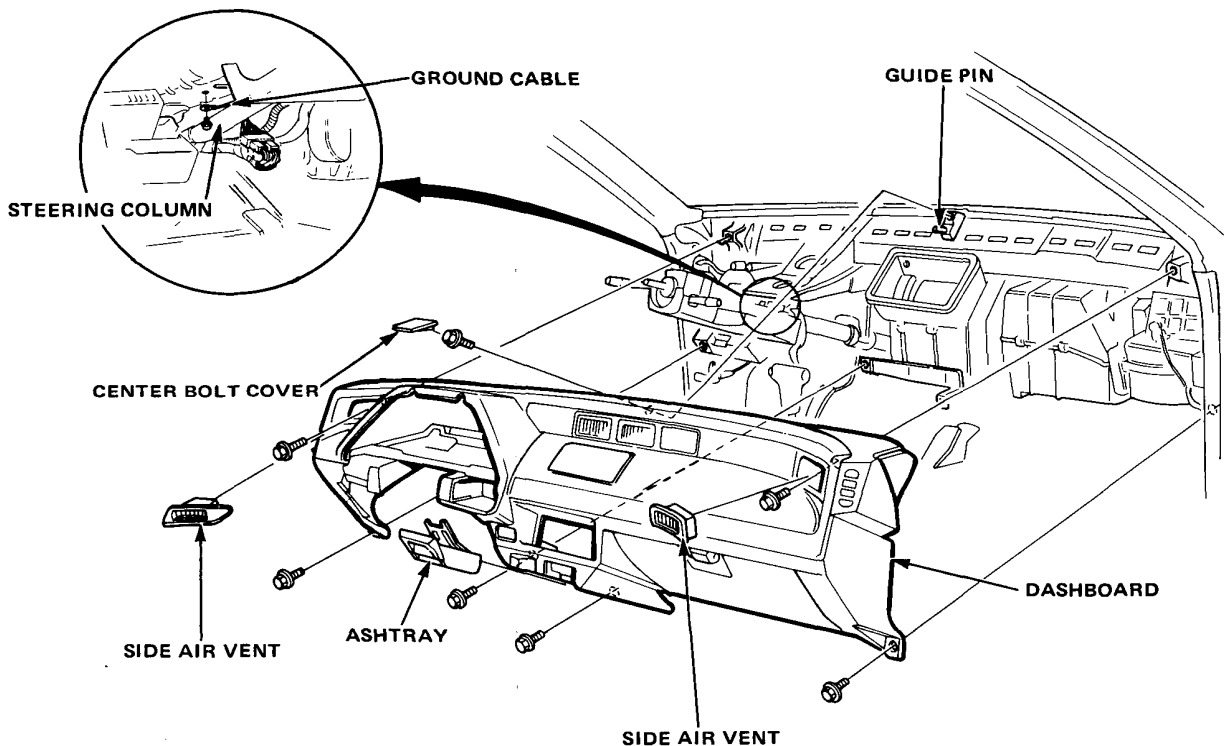
— (4D H/B) —



Dashboard

Replacement (Coupe)

1. To remove the dashboard, first remove the:
 - Steering wheel and column lower cover (pages 19-11 and 17).
 - Instrument panel.
 - Right and left air vents.
 - Center bolt cover.
 - Ashtray
2. Disconnect the ground and antenna cables from under the dashboard.
3. Disconnect the instrument wire harness from the fuse box. (See page 22-112 for connector locations.)
4. Remove the 9 dashboard mounting bolts.
5. Lift the dashboard as you pull so it will slide up and off the guide pin at the middle; hold it from underneath so it won't fall when it comes off the pin.



6. Install the dashboard in the reverse order of removal. Tighten the bolts gradually, in an alternating pattern, checking for dashboard fit and wire clearance.

CAUTION:

- Make sure the dashboard fits onto the guide pin correctly.
- Before tightening the dashboard bolts, make sure the instrument wire harness is not pinched.



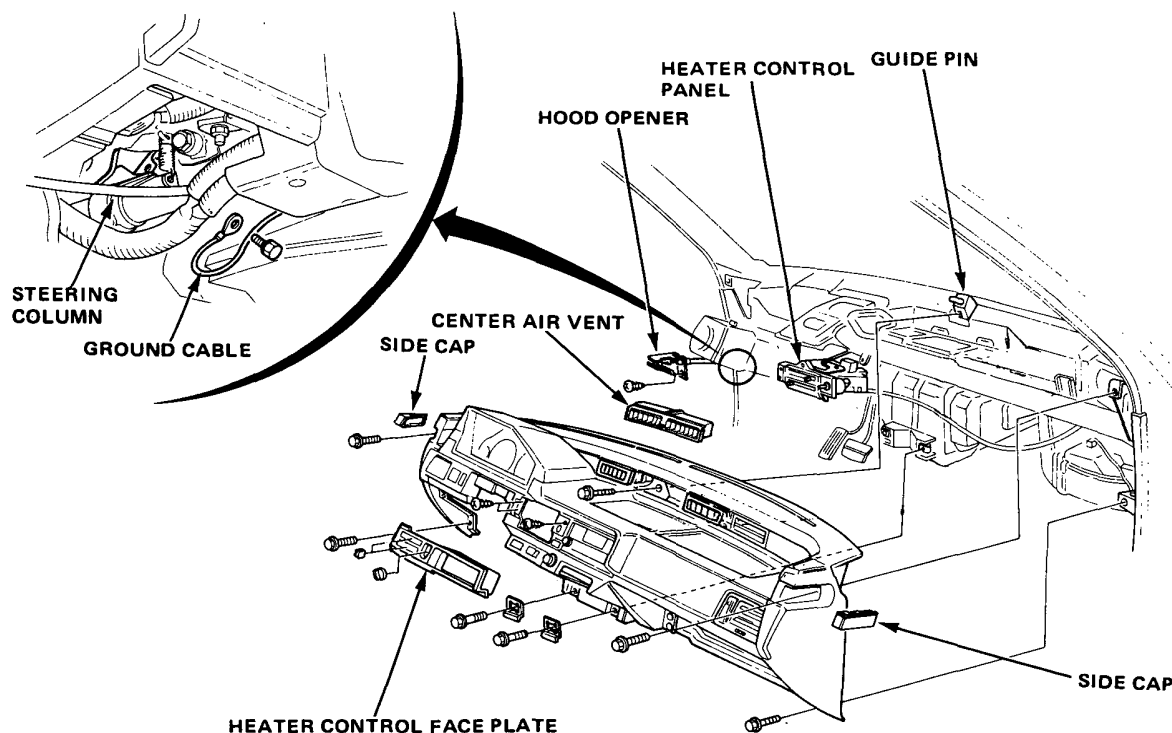
– (2D H/B, 4D, and 4D H/B)

1. To remove the dashboard, first remove the:

- Steering wheel (pages 19-11 and 17).
- Hood opener.
- Right and left side caps.
- Right and left side defroster garnish (4D H/B)
- Center air outlet (2D H/B and 4D).
- Clock (4D H/B).
- Ashtray.

2. Remove the dashboard lower panel, then disconnect the ground and speedometer cables from under the dashboard.
3. Remove the glove box (2D H/B and 4D) or the dashboard under dray (4D H/B), then disconnect the antenna cable.
4. Remove the choke cable from the dashboard panel, disconnect its wire harness.
5. Remove the heater control face plate and the 3 screws attaching the heater control panel to the dashboard.
6. Disconnect the instrument wire harness from the fuse box. (See page 22-112 for connector locations.)
7. Remove the dashboard mounting bolts.
8. Lift the dashboard as you pull so it will slide up and off the guide pin at the middle; hold it from underneath so it won't fall when it comes off the pin.

2D H/B and 4D:

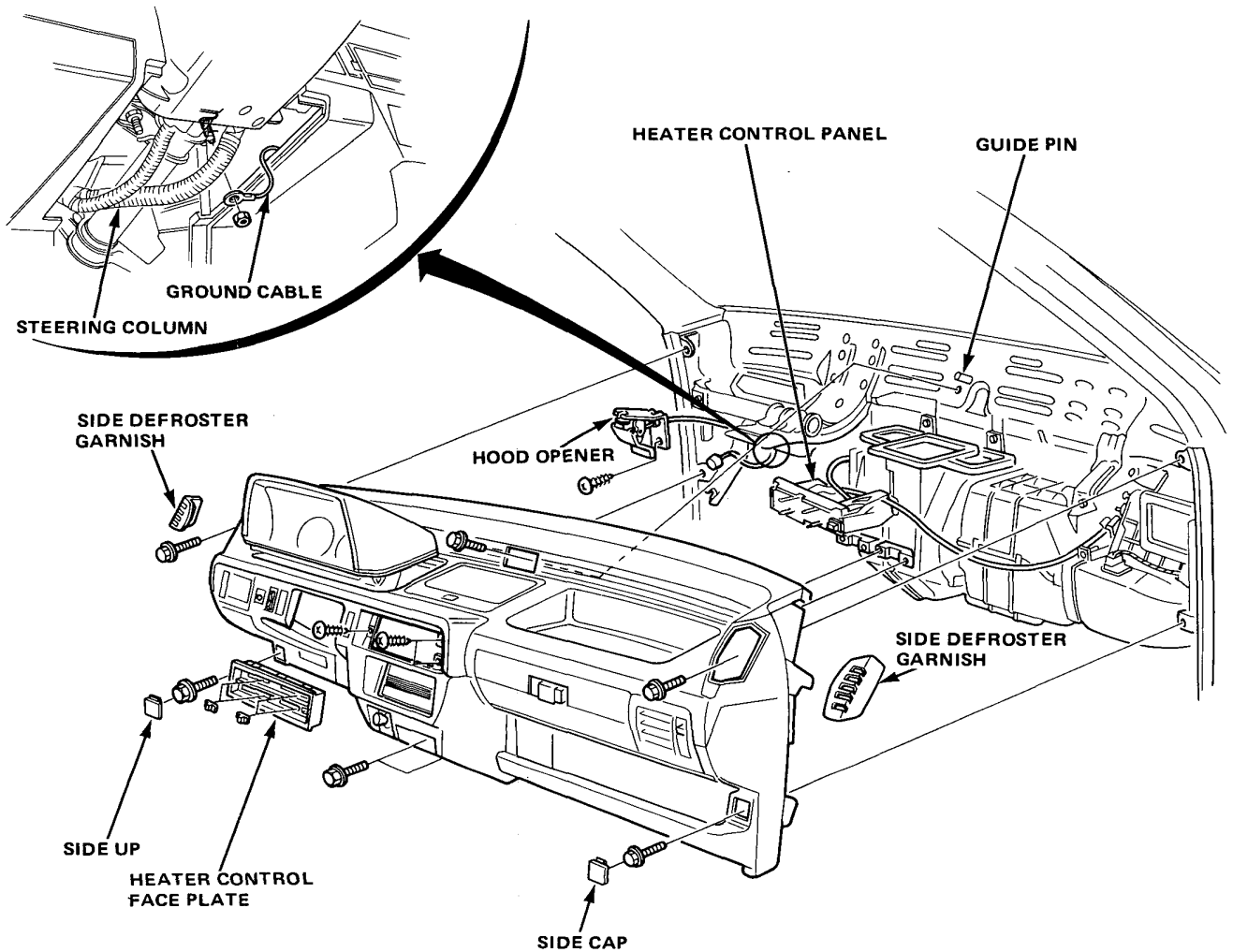


(cont'd)

Dashboard

Replacement (2D H/B, 4D, and 4D H/B Cont'd)

4D H/B:



9. Install the dashboard in the reverse order of removal. Tighten the bolts gradually, in an alternating pattern, checking for dashboard fit and wire clearance.

CAUTION:

- Make sure the dashboard fits onto the guide pin correctly.
- Before tightening the dashboard bolts, make sure the instrument wire harness is not pinched.